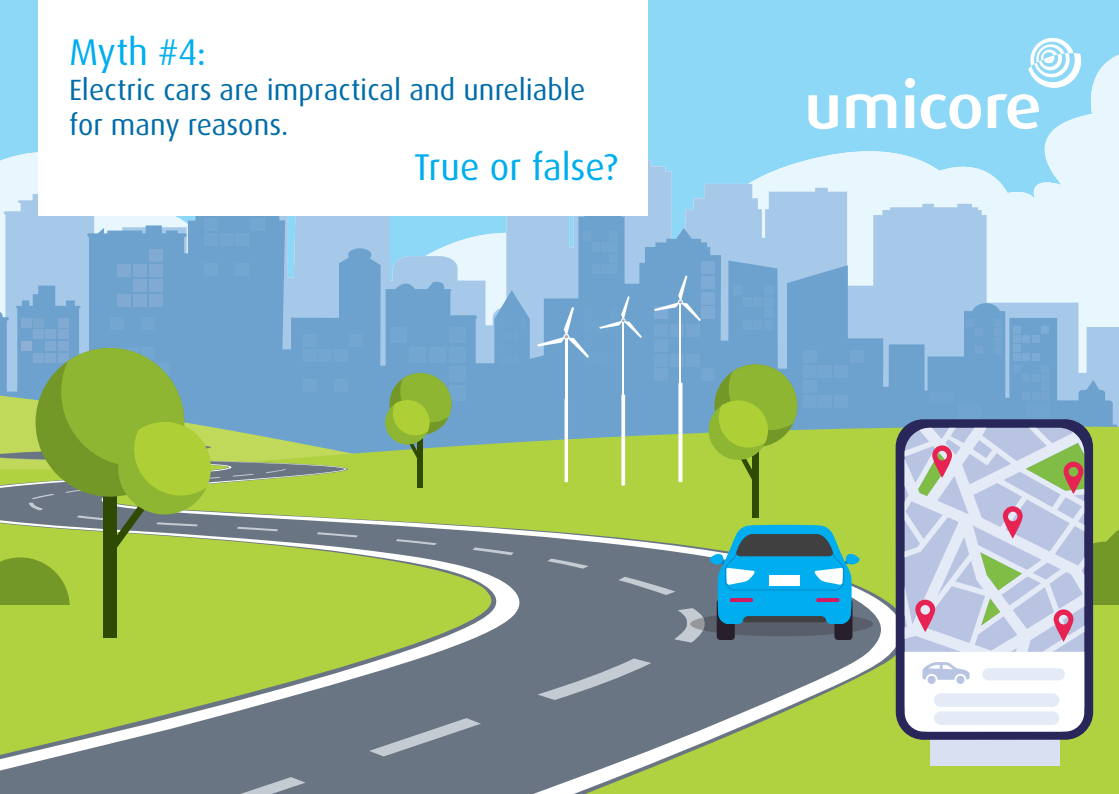


## Myth #4:

Electric cars are impractical and unreliable for many reasons.

True or false?

umicore 



## Improving battery technology has boosted drive ranges to **over 500 km** and fast-charging infrastructure is growing rapidly.

Drive range is increasing as battery energy density rises. Today some models can travel up to 550 km on a charge. This rise should continue. The number of electric charging stations is growing rapidly. There were about 5.2 million worldwide at the end of 2018, up 44% from 2017.

Right now, fast chargers charge vehicles in less than half an hour. Rapid-charging stations are being installed every 120 km along Europe's motorways. And don't forget: an EV can be charged overnight with a domestic socket.

Source: [www.volkswagen-newsroom.com/en/stories/12-myths-of-e-mobility-5031](http://www.volkswagen-newsroom.com/en/stories/12-myths-of-e-mobility-5031)  
[www.iea.org/reports/global-ev-outlook-2019](http://www.iea.org/reports/global-ev-outlook-2019)  
<https://ionity.eu/>

